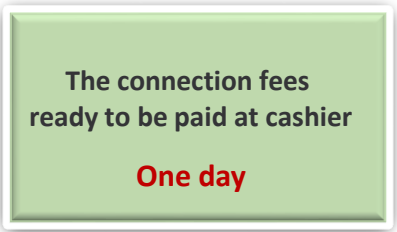
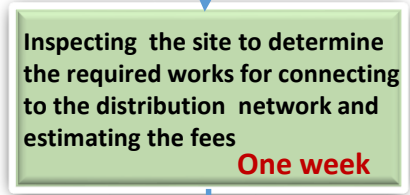
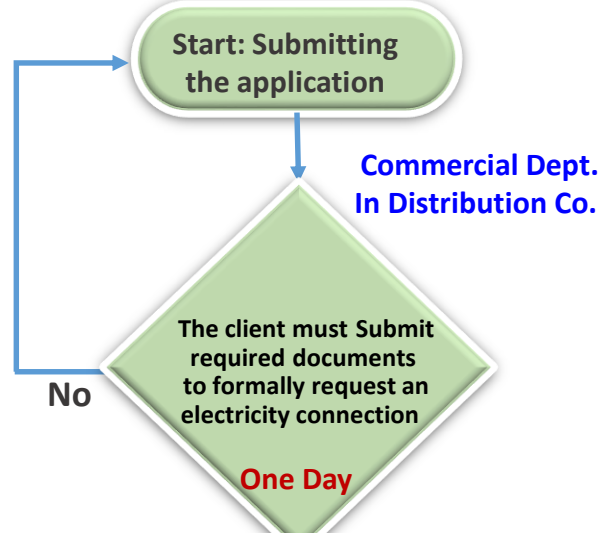
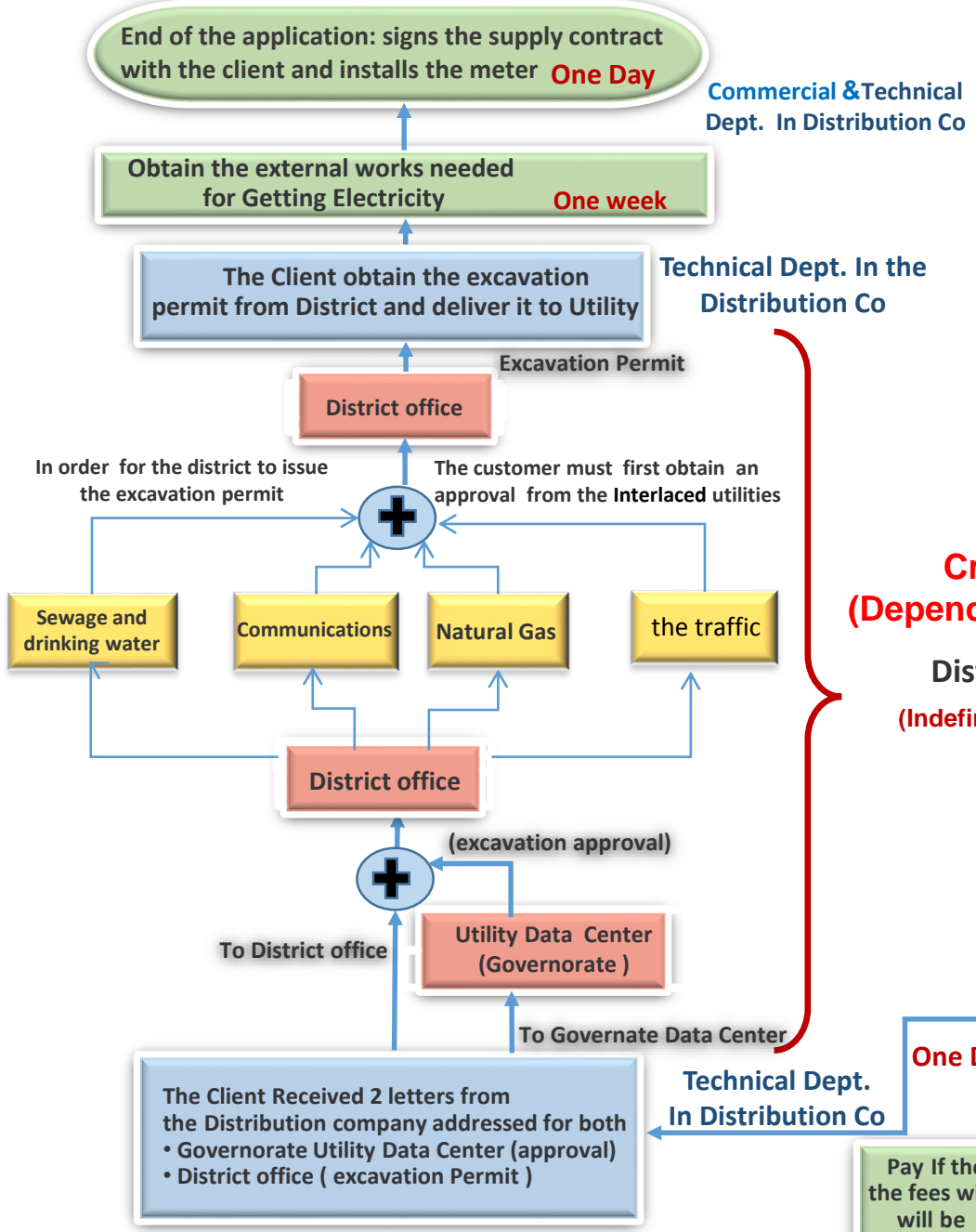


Procedures for Getting Electricity
 (First stage: reduction of procedures time from 34 days to only 18 days)
 The duration time only 18 days w/o time needed for excavation permits



Critical Path (Depend on Third Party)

District Office (Indefinite period of time)



client must complete the documents and resubmit

- Distribution Company
- Governate utility data center
- Utilities
- The client

Most of Technical and Commercial Departments in Distribution companies are located at the same place